

# Mr. Moon

by Stacy West



Quilt size:





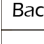
Skill Level:

My Friend, Mr. Moon Quilt

Designed by Emma Lea Creative

[www.henryglassfabrics.net](http://www.henryglassfabrics.net)

## My Friend, Mr. Moon Quilt Ordering Guide

SKU	Yards	Meters	6 Kits	12 Kits
 2606-33	5/8 yds	0.57m	1 bolt	1 bolt
 2607-55	1 1/8 yds	1.03m	1 bolt	1 bolt
 2607-93	1/2 yds	0.46m	1 bolt	1 bolt
 2608-33*	1 yd	0.91m	1 bolt	1 bolt
 2609-55	1/2 yds	0.46m	1 bolt	1 bolt
 2610-93	1/2 yds	0.46m	1 bolt	1 bolt
 2611-44	5/8 yds	0.57m	1 bolt	1 bolt
 2611-94	1/2 yds	0.46m	1 bolt	1 bolt
 2612-93	1/2 yds	0.46m	1 bolt	1 bolt
 2613-99	3/4 yds	0.69m	1 bolt	1 bolt
 2615-99	3/4 yds	0.69m	1 bolt	1 bolt
 2619P-39 (10yd bolt)	1 yd	0.91m	1 bolt	2 bolts
 1027-99 (10yd bolt)	1/2 yds	0.46m	1 bolt	1 bolt
 1027-32 (10yd bolt)	1/2 yds	0.46m	1 bolt	1 bolt

### Backing Fabric Option

2606-33	5 1/2 yds	5.03m	3 bolts	5 bolts
---------	-----------	-------	---------	---------

\* Indicates binding fabric.  
FO = 18" x 22" (0.45m x 0.55m)  
All fabric quantities are based on 15yd bolts unless otherwise indicated.



2606-33  
Flying Witches  
Orange



2607-55  
Leaves and Vines  
Purple



2607-93  
Leaves and Vines  
Taupey Gray



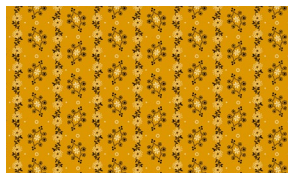
2608-39\*  
Geometric  
Orange



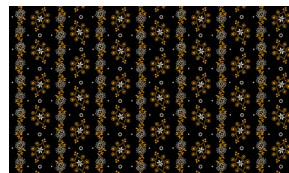
2609-55  
Squares & Stars Geo  
Purple



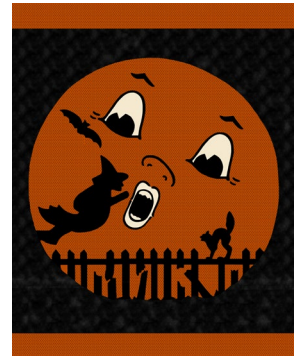
2610-93  
Zig Zag Geo  
Black/Orange



2611-44  
Delicate Stripe  
Cheddar



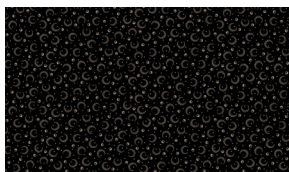
2611-94  
Delicate Stripe  
Black



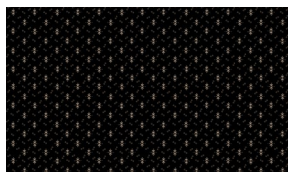
2619P-39  
Mr. Moon Panel  
Orange/Black



2612-93  
Abstract Leaves  
Black



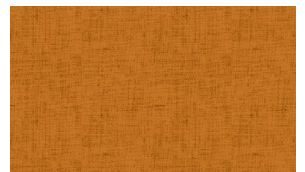
2613-99  
Mini Crescent Moons  
Black



2615-99  
Geometric Triangles  
Black



1027-99  
Timeless Linen Basics  
Black



1027-32  
Timeless Linen Basics  
Orange